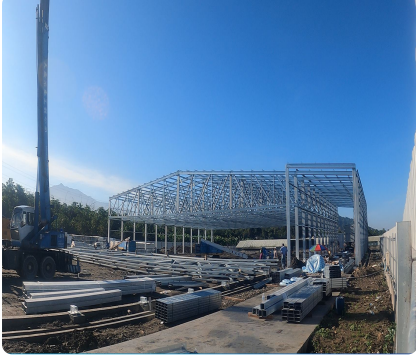





First C-Lines hatchery building for our Taiwan-based animal feed client

www.c-lines.com



Industry: Hatchery 

Structure: Infinity 

Country: Taiwan

First C-Lines hatchery building for our Taiwan-based animal feed client

In 2015, we had the opportunity to build the first C-Lines hatchery building for our Taiwan-based animal feed client. It was the first stage of a larger project. We were once again able to work with them thanks to the new C-Lines Infinity structure and a complete waterproof insulation system for internal and external walls. The building was ordered in 2020 and completed in 2021. The new innovation made the building stronger and more capable of performing in the difficult regional climate conditions. Wet and damp walls represent a tremendous problem in many parts of the world and waterproofing is a special skill that can be surprisingly difficult. Sophisticated materials and a proper building design are the best way to guarantee long-lasting results. Waterproofing reduces mold and mildew helps maximize the usable space and provides a comfortable working environment. Additionally, it prevents rapid temperature changes and ensures the HVAC (heating ventilation and conditioning) system works efficiently since it doesn't have to compensate for large temperature fluctuations. The design went well, delivery was on time and material quality met expectations. Together with the client, we also overcame communication challenges caused by the pandemic by finding efficient ways to collaborate to reach our common goals.